

**GENERAL LANDSCAPE NOTES:**

- EACH CONTRACTOR IS TO VERIFY WITH OWNER AND UTILITY COMPANIES THE LOCATIONS OF ALL UTILITIES PRIOR TO CONSTRUCTION. TO DETERMINE IN THE FIELD THE ACTUAL LOCATIONS AND ELEVATIONS OF ALL EXISTING UTILITIES, WHETHER SHOWN ON THE PLANS OR NOT. THE CONTRACTOR SHALL CALL UTILITY PROTECTION SERVICE 72 HOURS PRIOR TO CONSTRUCTION.
- EXAMINE FINISH SURFACE, GRADES, TOPSOIL QUALITY AND DEPTH. DO NOT START ANY WORK UNTIL UNSATISFACTORY CONDITIONS HAVE BEEN CORRECTED. VERIFY LIMITS OF WORK BEFORE STARTING.
- CONTRACTOR RESPONSIBLE FOR COST OF REPAIRS TO EXISTING SITE CONDITIONS WHEN DAMAGED BY CONTRACTOR. REPAIR TO THE SATISFACTION OF THE OWNER.
- ALL PLANT MASSES TO BE CONTAINED WITHIN 3" DEEP HARDWOOD BARK MULCH BED.
- CONTRACTOR SHALL MAINTAIN POSITIVE DRAINAGE IN LAWN AREAS.
- FINE GRADE LAWN AREAS TO PROVIDE A SMOOTH AND CONTINUAL GRADE FREE OF IRREGULARITIES OR DEPRESSIONS.
- CONTRACTOR SHALL SEED OR SOD ALL AREAS DISTURBED DURING CONSTRUCTION. SEE PLAN.
- ALL PLANTS SHALL MEET OR EXCEED STANDARDS SET IN THE U.S.A. STANDARD FOR NURSERY STOCK.
- ALL PLANTING OPERATIONS SHALL ADHERE TO THE AMERICAN ASSOCIATION OF NURSERYMEN STANDARDS.

**CONSTRUCTION NOTES**

- LAWN AREA, FILL/ REGRADE ALL AREAS DISTURBED BY CONSTRUCTION. FILL AREAS WITH TOPSOIL. MINIMUM DEPTH SHALL BE 4". MEET ADJACENT SURFACES FLUSH. PROVIDE POSITIVE DRAINAGE ACROSS ALL SURFACES AND SEED WITH TURF-TYPE TALL FESCUE MIX.
- LANDSCAPE AREA, FILL WITH PLANTING SOIL. MINIMUM DEPTH SHALL BE 12". MEET ADJACENT SURFACES FLUSH. INSTALL PLANT MATERIAL AS INDICATED AND MULCH.
- 6" BACKED BENCH W/ END ARMS, TYP. OF 3. MANUFACTURER: LANDSCAPE FORMS, INC. MODEL: NEOLIVIANO 69" BACKED W/ ARMS BENCH TO BE ANCHORED TO PAVEMENT PER MANUFACTURER'S INSTRUCTIONS.
- MULCHED PARKING LOT ISLAND
- GRILL ISLAND - BY OWNER
- SITE FURNITURE - BY OWNER
- 5' STEEL POOL FENCE - SEE DETAIL #5/ L1.02.
- 8' VINYL-COATED CHAIN LINK FENCE - SEE DETAIL #3/ L1.02.
- PICKLEBALL COURT - SEE DETAIL #4/ L1.02.

**THE MINGO**

3060 DURRELL AVE.  
CINCINNATI, OH

© 2020 BY:  
BERARDI + PARTNERS, INC.  
ARCHITECTS AND ENGINEERS  
ALL RIGHTS RESERVED

THE ARRANGEMENTS DEPICTED HEREIN ARE THE SOLE PROPERTY OF BERARDI + PARTNERS, INC., ARCHITECTS AND ENGINEERS, AND MAY NOT BE REPRODUCED WITHOUT ITS WRITTEN PERMISSION

NOTE:  
1. ALL BIDDERS SHALL VISIT THE SITE AND BECOME FAMILIAR WITH THE EXISTING CONDITIONS AND REQUIREMENTS OF THE PROJECT AND SHALL NOTIFY THE ARCHITECT OF ANY ERRORS AND OMISSIONS SUBSEQUENTLY DISCOVERED IN THE CONTRACT DOCUMENTS.  
2. THE CONTRACT DOCUMENTS ARE COMPRISED OF THE DRAWINGS AND THE PROJECT MANUAL IN THEIR ENTIRETY. THE INFORMATION IN THESE DOCUMENTS IS DEPENDENT UPON AND COMPLEMENTARY OF EACH OTHER. SEPARATION OF THE CONTRACT DOCUMENTS SHALL NOT BE PERMITTED. IF THE CONTRACTOR CHOOSES TO SEPARATE THE DOCUMENTS, THEY DO SO AT THEIR OWN RISK AND EXPENSE.  
3. ADDITIONALLY, SEE GENERAL INFORMATION ON "A" SHEETS.  
4. THE CLIENT ACKNOWLEDGES THE CONSULTANTS (ARCHITECT) DRAWINGS AND SPECIFICATIONS, INCLUDING ALL DOCUMENTS ON ELECTRONIC MEDIA AS INSTRUMENTS OF THE CONSULTANTS (ARCHITECT) PROFESSIONAL SERVICE. THE CLIENT SHALL NOT REUSE OR MAKE OR PERMIT TO BE MADE ANY MODIFICATION TO THE DRAWINGS AND SPECIFICATIONS WITHOUT THE PRIOR WRITTEN AUTHORIZATION OF THE CONSULTANT (ARCHITECT). THE CLIENT AGREES TO WAIVE ANY CLAIM AGAINST THE CONSULTANT (ARCHITECT) ARISING FROM ANY UNAUTHORIZED TRANSFER, REUSE OR MODIFICATION OF THE DRAWINGS AND SPECIFICATIONS.  
5. ARCHITECT CANNOT WARRANT THE ACCURACY OF DATA CONTAINED HEREIN, ANY USE OR REUSE OF ORIGINAL OR ALTERED CAD DESIGN MATERIALS BY THE USER OR OTHER PARTIES WITHOUT THE REVIEW AND WRITTEN APPROVAL OF THE ARCHITECT SHALL BE AT THE SOLE RISK OF THE USER. FURTHERMORE, USER AGREES TO DEFEND, INDEMNIFY, AND HOLD ARCHITECT HARMLESS FROM ALL CLAIMS, INJURIES, DAMAGES, LOSSES, EXPENSES, AND ATTORNEY'S FEES ARISING OUT OF THE MODIFICATION OR REUSE OF THESE MATERIALS.  
6. THESE DRAWINGS AS PART OF THE CONTRACT DOCUMENTS ARE DIAGRAMMATIC AND ARE NOT INTENDED TO DEFINE EXACT QUANTITIES, LOCATIONS OR COORDINATE REQUIREMENTS. THE DRAWINGS SHALL NOT BE SCALED. EXACT STATE AND LOCAL CODE REQUIREMENTS AND OTHER APPLICABLE CODE REQUIREMENTS SHALL BE VERIFIED BY AND ARE THE SOLE RESPONSIBILITY OF THIS CONTRACTOR. ANY INFORMATION WHICH DIRECTLY CONFLICTS WITH ANY OF THESE CODES OR ANY DISCREPANCIES FOUND IN THE CONTRACT DOCUMENTS SHALL BE BROUGHT TO THE ATTENTION OF THE PROJECT ARCHITECT.

**LANDSCAPE CODE SUMMARY**

CODE SECTION	REQUIRED	PROVIDED
1425-27 - Parking Lot Screening	In Residential Districts, a screen fence or solid wall is required for parking areas for four or more vehicles which adjoin or face any other premises, either abutting or directly opposite across-the-street, situated in any Residential or Parks and Recreation District. The fence or wall must be at least four feet and a maximum of six feet in height and must be maintained in good condition. A combination of a four-foot high berm with three-foot high continuous evergreen hedgerow or four-foot high continuous evergreen hedgerow may be substituted for screen fencing and walls.	Evergreen hedge provided along east side of parking lot facing Woodburn Ave.
1425-29 - Parking Lot Landscaping	One tree, two inches or more in caliper, must be planted for every ten parking spaces. (a) Perimeter Landscaping. Parking lots must provide a perimeter landscape area of at least three feet in width. (b) Ground Cover. Ground cover must be installed appropriate to the surface conditions of the Grass is the default landscaping material. 92 car spaces / 10 = 9.2 or 10 trees	Trees provided = 10

**CSR**

DATE: 10/04/2024  
PROJECT #: 22156

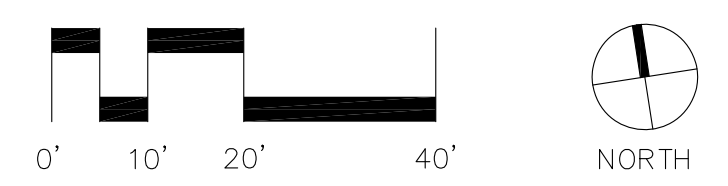


**PLANTING PLAN**

**L1.01**

**EDGE**  
330 W. SPRING STREET, SUITE 350  
COLUMBUS, OH 43215  
614.486.3343  
www.edgela.com

**BERARDI+**  
ARCHITECTURE | INTERIOR DESIGN | ENGINEERING  
1398 GOODALE BOULEVARD, COLUMBUS, OHIO 43212  
P 614.221.1110 | berardipartners.com



**LANDSCAPE CODE SUMMARY**

CODE SECTION	REQUIRED	PROVIDED
1425-27 - Parking Lot Screening	In Residential Districts, a screen fence or solid wall is required for parking areas for four or more vehicles which adjoin or face any other premises, either abutting or directly opposite across-the-street, situated in any Residential or Parks and Recreation District. The fence or wall must be at least four feet and a maximum of six feet in height and must be maintained in good condition. A combination of a four-foot high berm with three-foot high continuous evergreen hedgerow or four-foot high continuous evergreen hedgerow may be substituted for screen fencing and walls.	Evergreen hedge provided along east side of parking lot facing Woodburn Ave.
1425-29 - Parking Lot Landscaping	One tree, two inches or more in caliper, must be planted for every ten parking spaces. (a) Perimeter Landscaping. Parking lots must provide a perimeter landscape area of at least three feet in width. (b) Ground Cover. Ground cover must be installed appropriate to the surface conditions of the Grass is the default landscaping material. 92 car spaces / 10 = 9.2 or 10 trees	Trees provided = 10

PLANT MATERIALS LIST CONTRACTOR RESPONSIBLE FOR ALL PLANT QUANTITIES SHOWN ON PLAN

QTY	ABR	BOTANICAL NAME	COMMON NAME	SIZE	ROOT	REMARKS
TREES						
4	GBP	Ginkgo biloba 'Princeton Sentry'	PRINCETON SENTRY GINKGO	2-1/2' Cal.	B&B	
6	MVI	Magnolia virginiana	SWEETBAY MAGNOLIA	7-8' Hgt.	B&B	
5	PAM	Platanus x acerifolia 'Marlon Circle'	EXCLAMATION LONDON PLANETREE	2-1/2' Cal.	B&B	
3	UAM	Ulmus 'Americana'	PRINCETON ELM	2-1/2' Cal.	B&B	
5	ZSG	Zelkova serrata 'Green Vase'	GREEN VASE ZELKOVA	2-1/2' Cal.	B&B	
8	CBC	Carpinus betulus 'Columnaris Nana'	DWARF EUROPEAN HORNBEAM	2-1/2' Cal.	B&B	MATCHED FORM
ORNAMENTAL TREES						
6	AGA	Amelanchier x grandiflora 'Autumn Brilliance'	AUTUMN BRILLIANCE SERVICEBERRY	6-7' Hgt.	B&B	MULTI-STEM
SHRUBS						
3	AMA	Aronia melanocarpa 'Autumn Magic'	BLACK CHOKEBERRY 'AUTUMN MAGIC'	36" Hgt.	B&B	
55	ILH	Itea virginica 'Little Henry'	LITTLE HENRY SWEETSPICE	18"-24" Hgt.	Cont.	
32	CAH	Clethra alnifolia 'Hummingbird'	HUMMINGBIRD SUMMERSWEET	24" Hgt.	Cont.	
26	FGM	Fothergilla gardenii 'Mt. Airy'	DWARF FATHERGILLA	24" Hgt.	Cont.	
39	JCS	Juniperus chinensis 'Sea Green'	SEA GREEN JUNIPER	18"-24" Hgt.	Cont.	SPACED @ 3.5' O.C.
61	SPP	Syringa pubescens subsp. patula 'Miss Kim'	MISS KIM LILAC	24"-30" Hgt.	Cont.	
62	TMD	Taxus x media 'Densiflora'	DENSE YEW	18"-24" Hgt.	Cont.	
89	TME	Taxus x media 'Everlow'	EVERLOW YEW	18" Hgt.	Cont.	
1	VCA	Viburnum carlesii	KOREAN SPICE VIBURNUM	30"-36" Hgt.	B&B	
10	RAG	Rhus aromatica 'Gro-Low'	GRO-LOW SUMAC	24" Spr.	Cont.	
PERENNIALS/ GRASSES/ GROUNDCOVER						
185	HHR	Hemerocallis 'Happy Returns'	HAPPY RETURNS DAYLILY	1 Gal.	Cont.	
75	PAH	Pennisetum alopecuroides 'Hameln'	DWARF FOUNTAIN GRASS	1 Gal.	Cont.	
121	LMV	Liriope muscari 'Variegata'	VARIEGATED LILYTURF	1 Gal.	Cont.	
20	CAK	Calamagrostis x acutiflora 'Karl Foerster'	KARL FOERSTER FEATHER REED GRASS	1 Gal.	Cont.	
38	NFW	Nepeta x faassenii 'Walker's Low'	WALKER'S LOW CATMINT	1 Gal.	Cont.	

THE MINGO

3060 DURRELL AVE.  
CINCINNATI, OH

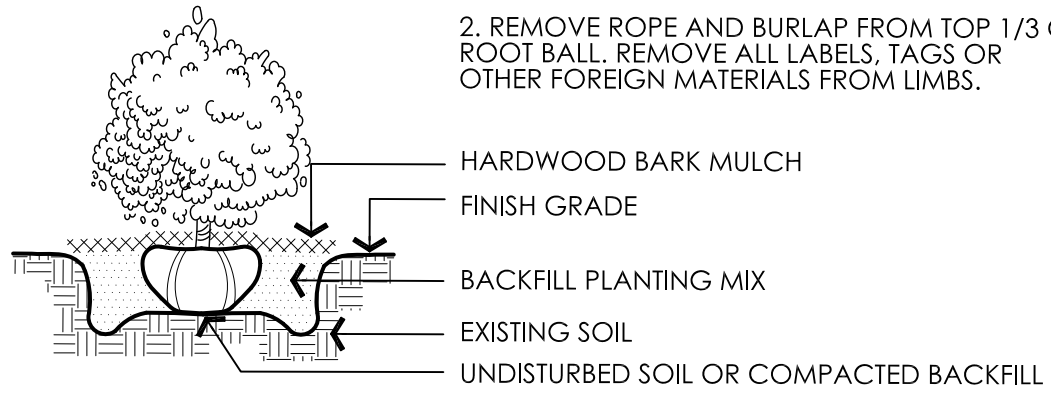
© 2020 BY:  
BERARDI + PARTNERS, INC.  
ARCHITECTS AND ENGINEERS  
ALL RIGHTS RESERVED

THE ARRANGEMENTS DEPICTED HEREIN ARE THE SOLE PROPERTY OF BERARDI + PARTNERS, INC., ARCHITECTS AND ENGINEERS, AND MAY NOT BE REPRODUCED WITHOUT ITS WRITTEN PERMISSION

NOTE:  
1. ALL BIDDERS SHALL VISIT THE SITE AND BECOME FAMILIAR WITH THE EXISTING CONDITIONS AND REQUIREMENTS OF THE PROJECT AND SHALL NOTIFY THE ARCHITECT OF ANY ERRORS AND OMISSIONS SUBSEQUENTLY DISCOVERED IN THE CONTRACT DOCUMENTS.  
2. THE CONTRACT DOCUMENTS ARE COMPRISED OF THE DRAWINGS AND THE PROJECT MANUAL IN THEIR ENTIRETY. THE INFORMATION IN THESE DOCUMENTS IS DEPENDENT UPON AND COMPLEMENTARY OF EACH OTHER. SEPARATION OF THE CONTRACT DOCUMENTS SHALL NOT BE PERMITTED. IF THE CONTRACTOR CHOOSES TO SEPARATE THE DOCUMENTS, THEY DO SO AT THEIR OWN RISK AND EXPENSE.  
3. ADDITIONALLY, SEE GENERAL INFORMATION ON 'A7' SHEETS.  
4. THE CLIENT ACKNOWLEDGES THE CONSULTANTS (ARCHITECT) DRAWINGS AND SPECIFICATION, INCLUDING ALL DOCUMENTS ON ELECTRONIC MEDIA AS INSTRUMENTS OF THE CONSULTANTS (ARCHITECT) PROFESSIONAL SERVICE. THE CLIENT SHALL NOT REUSE OR MAKE OR PERMIT TO BE MADE ANY MODIFICATION TO THE DRAWINGS AND SPECIFICATIONS WITHOUT THE PRIOR WRITTEN AUTHORIZATION OF THE CONSULTANT (ARCHITECT). THE CLIENT AGREES TO WAIVE ANY CLAIM AGAINST THE CONSULTANT (ARCHITECT) ARISING FROM ANY UNAUTHORIZED TRANSFER, REUSE OR MODIFICATION OF THE DRAWINGS AND SPECIFICATIONS. THE CLIENT CANNOT WARRANT THE ACCURACY OF DATA CONTAINED HEREIN. ANY USE OR REUSE OF ORIGINAL OR ALTERED CAD DESIGN MATERIALS BY THE USER OR OTHER PARTIES WITHOUT THE REVIEW AND WRITTEN APPROVAL OF THE ARCHITECT SHALL BE AT THE SOLE RISK OF THE USER. FURTHERMORE, USER AGREES TO DEFEND, INDEMNIFY, AND HOLD ARCHITECT HARMLESS FROM ALL CLAIMS, INJURIES, DAMAGES, LOSSES, EXPENSES, AND ATTORNEY'S FEES ARISING OUT OF THE MODIFICATION OR REUSE OF THESE MATERIALS.  
5. THESE DRAWINGS AS PART OF THE CONTRACT DOCUMENTS ARE DIAGRAMMATIC AND ARE NOT INTENDED TO DEFINE EXACT QUANTITIES, LOCATIONS OR COORDINATE REQUIREMENTS. THE DRAWINGS SHALL NOT BE SCALED. EXACT STATE AND LOCAL CODE REQUIREMENTS AND OTHER APPLICABLE CODE REQUIREMENTS SHALL BE VERIFIED BY AND ARE THE SOLE RESPONSIBILITY OF THIS CONTRACTOR. ANY INFORMATION WHICH DIRECTLY CONFLICTS WITH ANY OF THESE CODES OR ANY DISCREPANCIES FOUND IN THE CONTRACT DOCUMENTS SHALL BE BROUGHT TO THE ATTENTION OF THE PROJECT ARCHITECT.

NOTES:

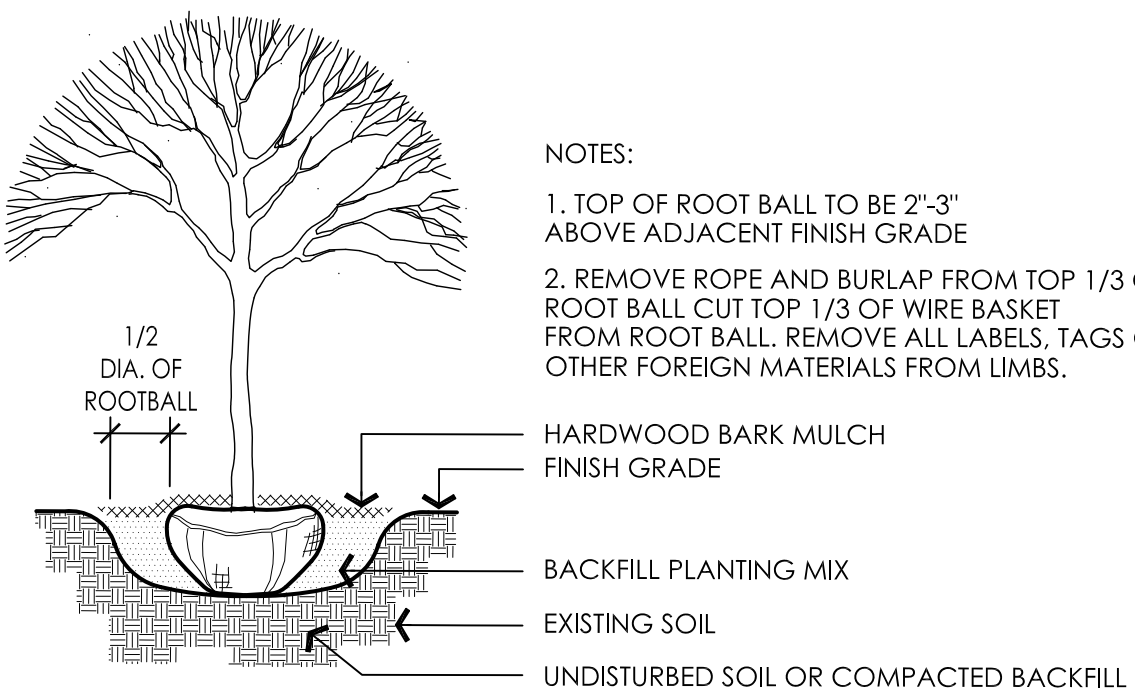
1. TOP OF ROOT BALL TO BE 2'-3" ABOVE ADJACENT FINISH GRADE
2. REMOVE ROPE AND BURLAP FROM TOP 1/3 OF ROOT BALL. REMOVE ALL LABELS, TAGS OR OTHER FOREIGN MATERIALS FROM LIMBS.



1 SHRUB PLANTING DETAIL  
NTS

NOTES:

1. TOP OF ROOT BALL TO BE 2'-3" ABOVE ADJACENT FINISH GRADE
2. REMOVE ROPE AND BURLAP FROM TOP 1/3 OF ROOT BALL CUT TOP 1/3 OF WIRE BASKET FROM ROOT BALL. REMOVE ALL LABELS, TAGS OR OTHER FOREIGN MATERIALS FROM LIMBS.



2 DECIDUOUS TREE PLANTING DETAIL  
NTS

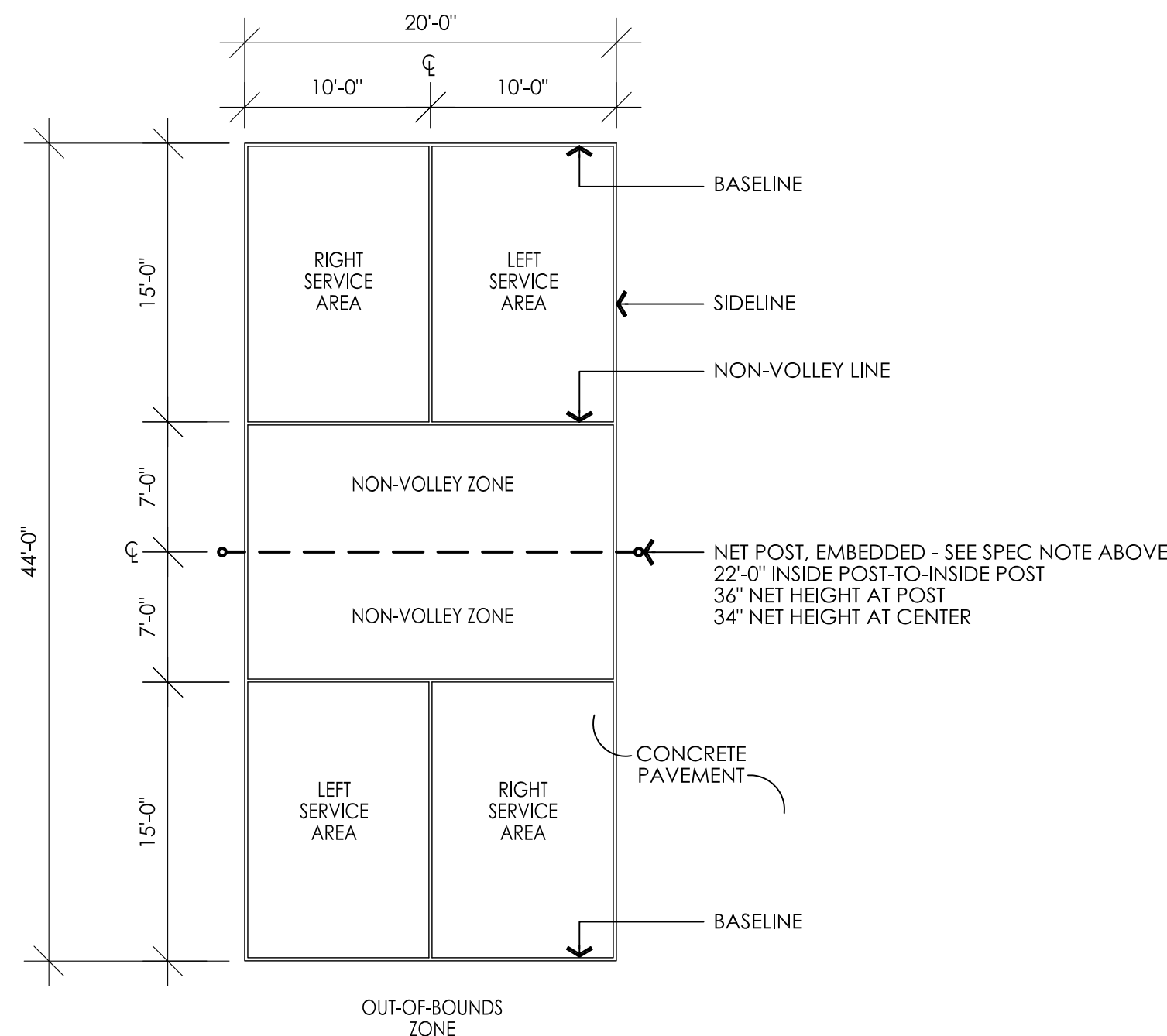
PICKLEBALL SURFACING:

AFTER CONCRETE PAVEMENT HAS CURED 28 DAYS APPLY (1) COAT ACRYLIC RESURFACER AND (2) COATS SKATEMASTER COATING SYSTEM PER MANUFACTURER'S INSTRUCTIONS.  
MANUFACTURER: SPORTMASTER SPORT SURFACES (SPORTMASTER.NET)  
SERVICE COURTS: 8' BLUE  
NON-VOLLEY ZONE (KITCHEN): BLUE  
OUT-OF-BOUNDS ZONE: BLUE (REVIEW LIMITS WITH OWNER'S REP)  
STRIPES COLOR: WHITE  
NET POSTS & NET: 2-7/8 ROUND NET POSTS W/ EXTERNAL WINCH (COLOR: BLACK) AND NET BY: TENNIS COURT SUPPLY (TCS)

NOTES:

1. ALL DIMENSIONS ARE TO THE OUTSIDE EDGE OF LINES.
2. LINES SHALL BE 2" WIDE.

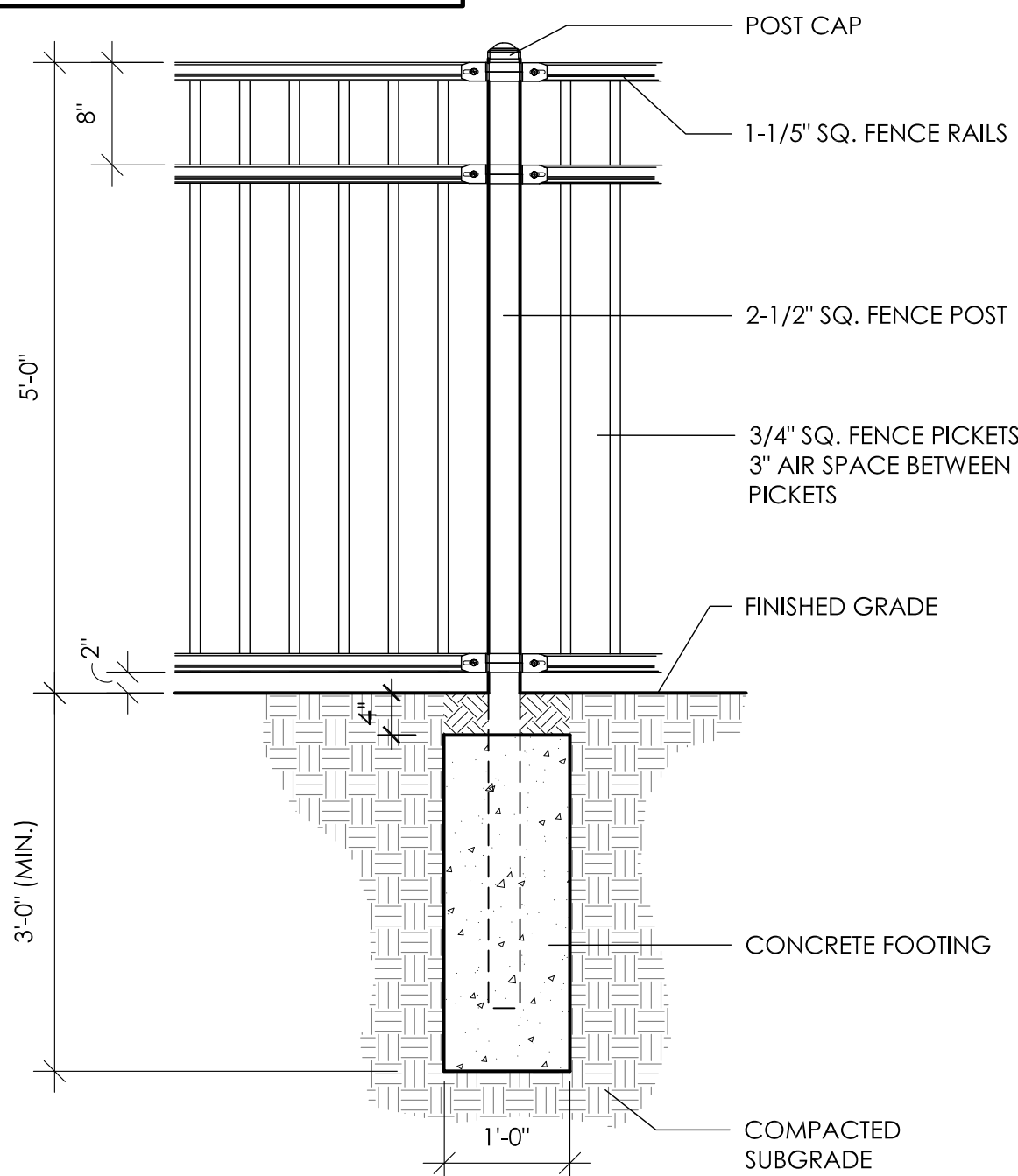
COLORS:  
LINES: WHITE  
SERVICE COURTS: BLUE  
NON-VOLLEY ZONE: BLUE  
OUT-OF-BOUNDS ZONE: GREEN



4 PICKLEBALL COURT

NOTES:  
STEEL W/ FLUSH BOTTOM PICKETED FENCE/ GATES  
MANUFACTURER: AMERISTAR  
MODEL: MONTAGE  
STYLE: MAJESTIC 3-RAIL  
FINISH: BLACK POWDERCOATED

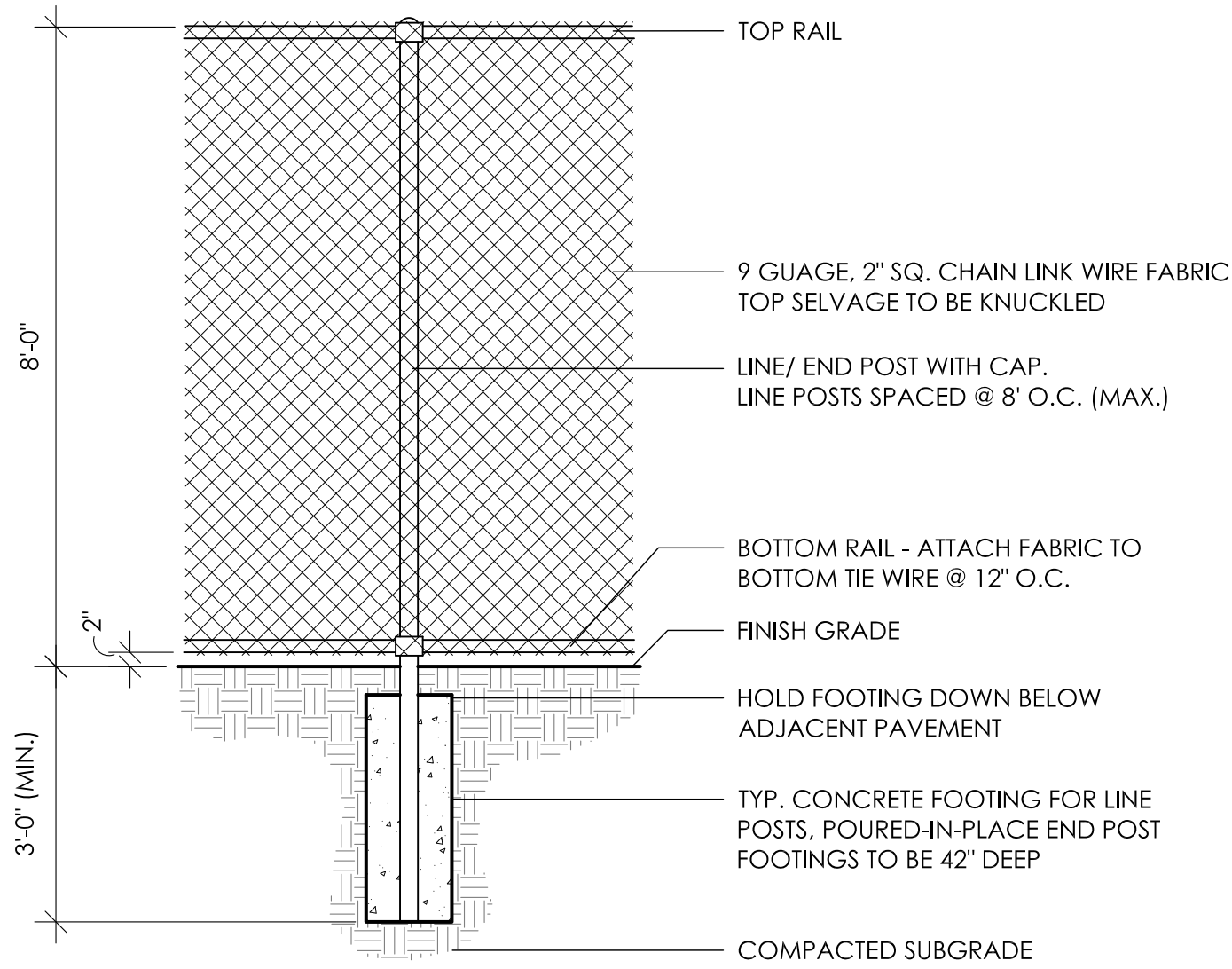
CONTRACTOR TO SUBMIT SHOP DRAWINGS FOR REVIEW PRIOR TO CONSTRUCTION.



5 5' STEEL POOL FENCE

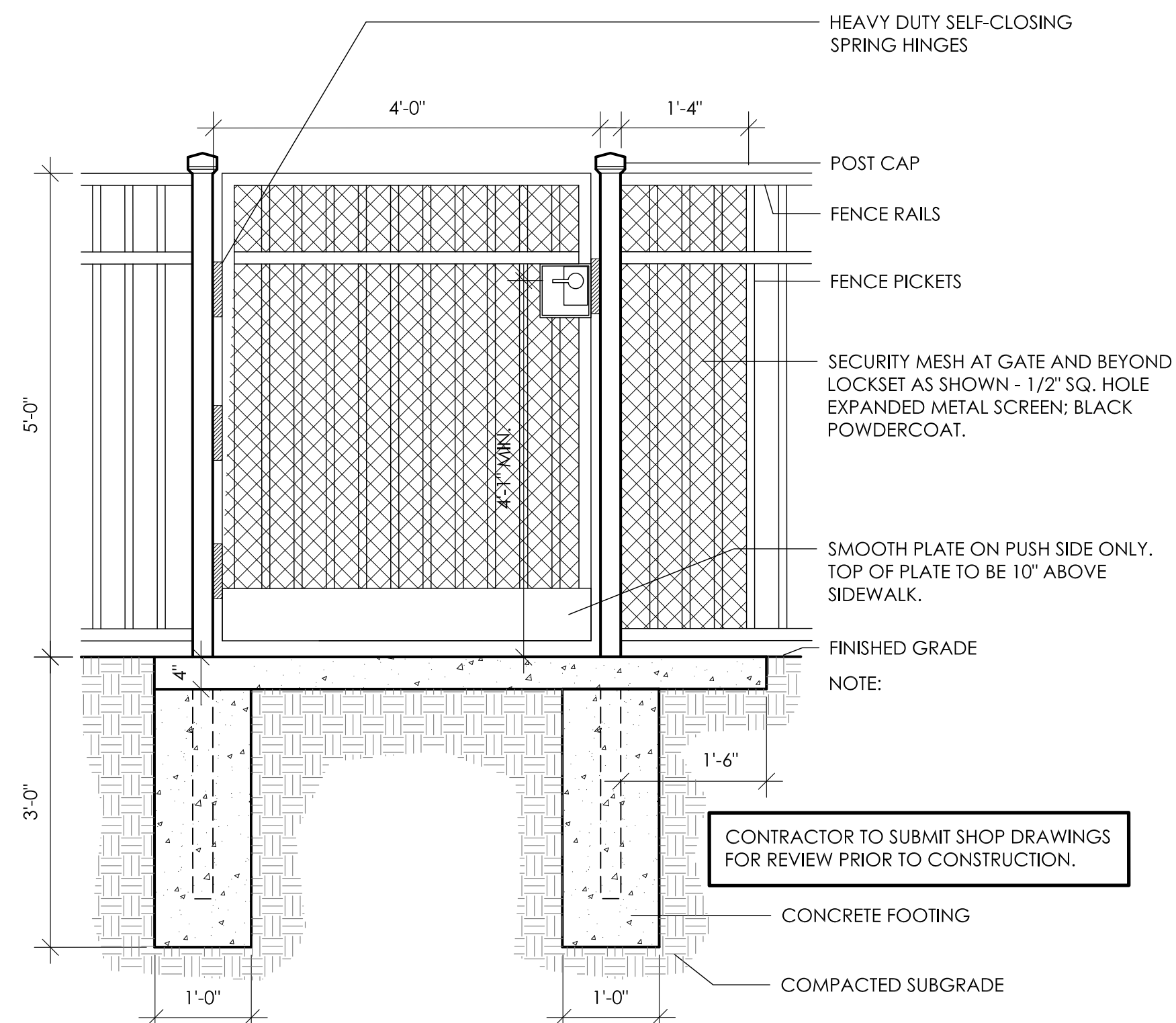
NOTES:

1. FENCE POST, TIES, AND FABRIC TO BE VINYL COATED; COLOR: BLACK.



3 8' VINYL-COATED CHAIN LINK FENCE - PICKLEBALL

HEAVY DUTY SELF-CLOSING SPRING HINGES



CONTRACTOR TO SUBMIT SHOP DRAWINGS FOR REVIEW PRIOR TO CONSTRUCTION.

6 5' STEEL POOL FENCE - GATE

CSR

DATE: 10/04/2024  
PROJECT #: 22156



PLANTING & SITE AMENITY DETAILS

L1.02

**EDGE**  
ARCHITECTURE | INTERIOR DESIGN | ENGINEERING  
1398 GOODALE BOULEVARD, COLUMBUS, OHIO 43215  
P 614.221.1110 [berardipartners.com](http://berardipartners.com)  
330 W. SPRING STREET, SUITE 350  
COLUMBUS, OH 43215  
614.486.3343  
[www.edgela.com](http://www.edgela.com)

**BERARDI+**  
ARCHITECTURE | INTERIOR DESIGN | ENGINEERING  
1398 GOODALE BOULEVARD, COLUMBUS, OHIO 43215  
P 614.221.1110 [berardipartners.com](http://berardipartners.com)